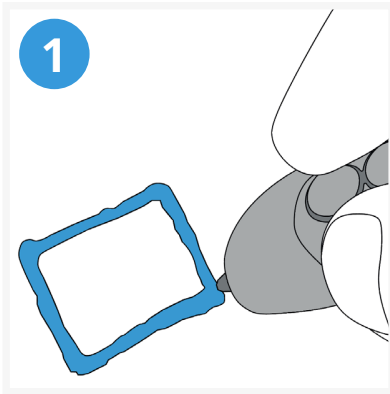


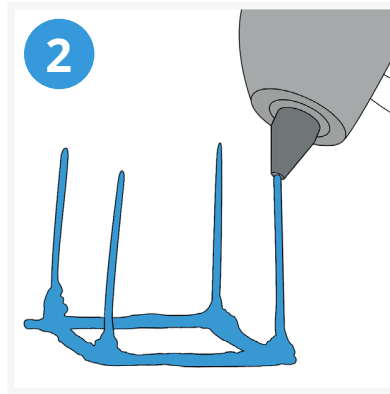
Drill #1: Doodling a cube



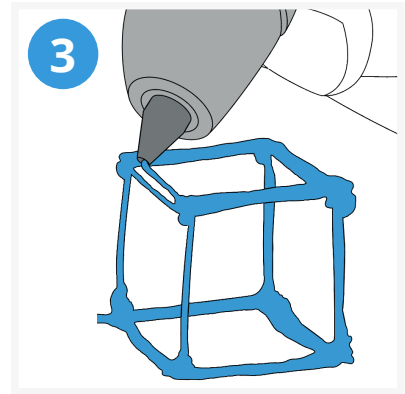
In this drill, we're going to make a cube. **Basic shapes are the fundamental building blocks of even the most complex structures**, so let's start with something easy. Once you're comfortable with the simpler shapes, you can use this technique to make any geometric design – no matter how large or intricate.



Pressing firmly, **draw a one inch (2.5 cm) square** on your Doodling surface. This will form the foundation and underside of your cube. Reinforce the shape by tracing over it again.



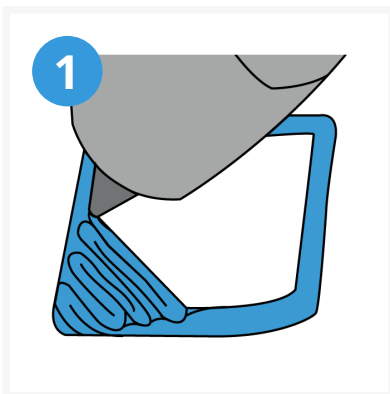
From each corner, **Doodle a one inch (2.5 cm) vertical line**, as illustrated, releasing the extrusion button when you reach the desired height. Hold the 3Doodler in place for 2-3 seconds, allowing the plastic to harden and then pull away.



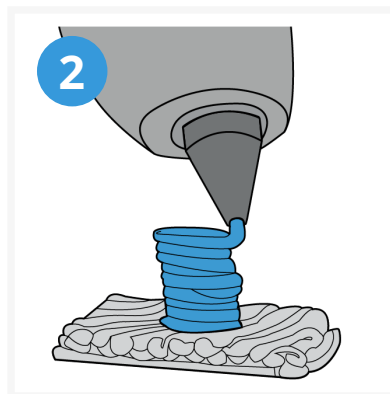
Connect the top of the vertical lines by **Doodling from point to point, creating a square** that sits above the underside of the cube. This is the top of the cube. Now your cube is sturdy and ready to stand on its own.

Drill #2: Doodling a swiggly tower

This drill will teach you how to make structures that stand on their own, so you can explore the fundamentals of **free hand drawing and creating Doodles in mid-air**.



Pressing firmly to anchor the plastic to your Doodling surface, **draw the outline of a one inch (2.5 cm) square and shade it in fully**, by moving the pen back and forth diagonally.



In the center of your square, begin to build up the base of the tower by **tightly coiling the plastic as it extrudes**.

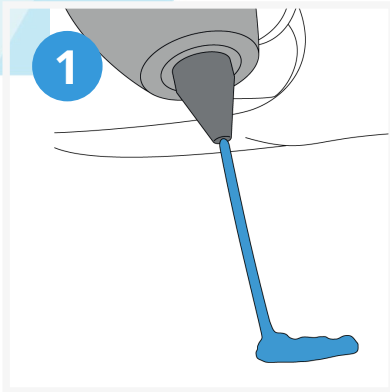


Build up your coil until it is about one inch (2.5 cm) high and then **move your hand upwards with a smooth sweeping motion from side to side**.

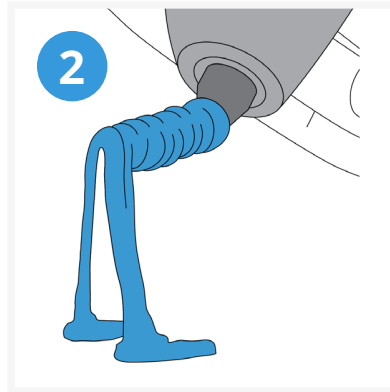
Drill #3: Doodling a dog



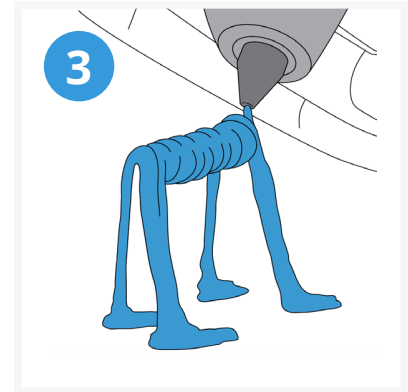
This cute little guy is quick and easy to make – and will get you **ready to create almost any creature or character you can dream up!**



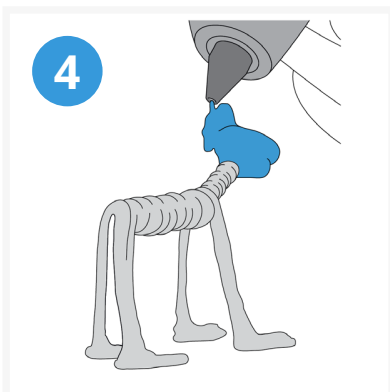
Anchor the Doodle on to a surface creating the paw of your dog. **Simply lift the pen creating the first back leg.** Continuing in one fluid motion, **loop back down towards the paper so that the plastic forms a tight arch** – now the dog has both back legs. Attach the second back paw to the paper & fill it in.



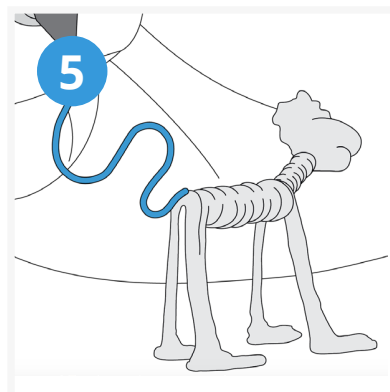
Reinforce the legs by tracing over them a few times fluidly, finishing with the pen at the top of the arch. From this point, **Doodle a tight horizontal coil to form the dog's body.** Ideally, his body should be a little shorter in length, than his legs.



The end of the horizontal coil forms the dog's front shoulders. From there, **Doodle downwards to make the first front leg**, then Doodle the paw, attaching it to the surface. Next, **trace back up along the leg to make an arch and Doodle down to make the second front leg and paw.**



To create the dog's neck, Doodle a short, tight coil diagonally upward from the dog's shoulders. At the front end of the coil, **Doodle an oval shape to create his head, with two little bumps to form his ears.**



Stop the flow of plastic and disconnect, then move the pen to the rear of his body and resume the flow of plastic, pressing gently to attach it. **Doodle his tail any shape you want!**